

## NO-COMPROMISE USABILITY

Many small hand-helds use smaller screens and keypads, limiting real-world usability. The SC21 has a **2.4" high resolution QVGA screen** – the largest on any TETRA hand-portable – allowing for quick and easy viewing in all light conditions, including direct sunlight. Night mode reduces glare in low light, and the large screen area is ideal for data-rich apps usage.

**Well-spaced keys** make data entry swift and accurate and the **intuitive user interface** is compatible with the SC20/STP range, making it easy to pick up and use with minimal training.

The **shortcut and notification bar** gives instant access to five favourite features, indicates missed calls or messages, and alerts the user to any changed states, such as speaker mute or transmit inhibit.

Custom-definable **SmartMenus** give users swift and immediate access to frequent features, short data applications and the forthcoming Sepura SmartApps.

## NO-COMPROMISE SMART CONNECTIVITY

Today's TETRA handsets are the central hub of connected body-worn devices, from barcode readers and RFID scanners to smartphones, smart watches and tablets. The SC21 offers both **Bluetooth and Wi-Fi connectivity**, allowing fast access to data for business and mission critical applications.

## NO-COMPROMISE SECURITY

Designed for mission critical use, the SC21 supports all levels of cryptographic protection inherited from the SC2 and STP series.

## LOWER COST OF OWNERSHIP

100% compatibility with STP RAC-based and SC20 sRAC-based accessories – along with common battery solutions – allows for significant re-use of existing investments and minimises capital expenditure.

**sepura**

[www.sepura.com/SC21](http://www.sepura.com/SC21)



**Sepura UK**  
9000 Cambridge Research Park  
Beach Drive  
Waterbeach  
CAMBRIDGE  
CB25 9TL  
Tel: +44 (0)1223 876000

**sepura**

Copyright © 2020 Sepura Limited. All rights reserved. For more information visit [sepura.com](http://sepura.com)  
Sepura's policy is to continually improve its products and services. The features and facilities described in this document were correct at publication, but are subject to change without notice.

@sepurapl



youtube.com/sepurapl



linkedin.com/company/sepura



instagram.com/sepurapl



sales@sepura.com



**SC21**  
HAND-HELD RADIO

**COMPACT  
WITHOUT  
COMPROMISE**



**sepura**

Going further in critical communications

# SC21

## CARE WORKERS

"I work alone. Man-Down gives me peace of mind while I focus on the task in hand."



## FRONT-LINE PUBLIC SAFETY

"Size counts, but audio clarity is critical. The SC21 delivers both."



## SENIOR PUBLIC SAFETY OFFICERS

"At last! A handset that is small but still powerful."



## COVERT OFFICERS

"It's so compact and easy to conceal, no one would know I'm on a covert operation."



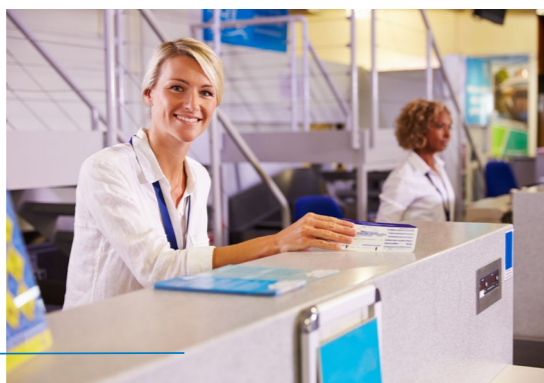
## SECURITY

"The range of specialist accessories makes it ideal for discreet use."



## TRANSPORT OPERATORS

"The SC21 is lightweight, easy to use and unobtrusive. It's perfect!"



# SC21

## LOCATION-BASED SERVICES

Via GPS; RFID tag supports tracking of pool-issue radios

## UNIQUE WATER PORTING

Expels liquid, maintaining clear communication even in heavy downpours

## ENHANCED APPS CAPABILITY

New Sepura AppSPACE supports integration with body-worn devices

## UNIQUE NOTIFICATION BAR

Gives rapid access to favourite features, indicates missed calls and messages, and clearly shows changed states such as speaker mute

## UNIQUE SMART MENUS

Allow customisable presentation of features and hundreds of soft key functions

## OPTIMISED FOR COVERT USE

With streamlined contours and a wide range of covert accessories

## EXTENDED OPERATIONAL RANGE

Class 3 RF transmission power and exceptional receive sensitivity for unrivalled coverage

## BEST-IN-CLASS AUDIO

Directional speaker provides outstanding sound quality, even in the noisiest environments

## ACCESSORY RE-USE

Compatible with all STP and SC20 batteries, as well as RAC- and sRAC-based accessories

## LARGE, SUNLIGHT-VISIBLE SCREEN

The largest on any TETRA hand-held radio, for easy apps use and screen clarity in all conditions

## ERGONOMIC KEYPAD

Well-spaced, hard-capped keys with haptic response for accurate data entry, even with gloved hands



## DUST AND WATERPROOF

IP65/IP67 certified the SC21 Series ergonomic non-slip case is impervious to water and continuous immersion to 1 meter for 30 mins.

Small and light enough to be lapel-worn, the SC21 is a next-generation, smart TETRA hand-held radio, and the latest addition to the SC2 Series.

With a wide range of functionality inherited from the ground-breaking SC20 hand-portable – yet 25% smaller – it offers all the benefits of a compact radio, with no compromise on performance.

## NO-COMPROMISE RF PERFORMANCE

With a **best-in-class TETRA engine**, the SC21 allows you to keep communicating where other small handsets fail.

Class 3 high-power RF transmission, coupled with **exceptional receive sensitivity**, gives the SC21 extended operational range, stretching coverage into areas where it was not possible before.

## NO-COMPROMISE COMMUNICATION

The SC21's **best-in-class audio capability** allows for rich, clear voice communication, however noisy the environment. The powerful, directional speaker projects audio to the user's ear, providing extra clarity, and **unique Water Porting technology** ensures that clarity is maintained, even in continuous, heavy rain.

## NO-COMPROMISE WORKER SAFETY

The SC21's **advanced worker safety features** offer peace of mind for lone or remote workers at all times of day or night.

From automated Man-Down and Lone Worker protection, to biometric user health monitoring, location tracking and a dedicated emergency button, in the event of a crisis, help is never far away.

