

**HARDWARE KIT INCLUDES:**

QTY	DESCRIPTION
1	SCREW 10-32x.75 HEX MS 18-8 SS
1	NUT 10-32 HEX 18-8 SS
2	WASHER 10 INT 4-10 SS
1	NUT 5/8-24 303 HEX SS
1	WASHER 5/8 410 SS
1	O-RING 114 EPDM

**MAXIMUM CHARACTERISTICS**

**APPLICATION:**

FOR TWO WAY RADIO AND SCADA APPLICATIONS  
NON-WEATHERIZED, BULKHEAD MOUNT

**SURGE:**

20kA IEC 61000-4-5 8/20µs WAVEFORM MULTIPLE

**TURN-ON:**

600Vdc ±20%

**TURN-ON TIME:**

2.5ns for 2kV/ns

**FREQUENCY RANGE:**

10MHz to 1GHz

**VSWR:**

≤ 1.1 to 1 OVER FREQUENCY RANGE

**INSERTION LOSS:**

≤ 0.1dB OVER FREQUENCY RANGE

**MAX POWER:**

1.5kW @ 10 to 50MHz

375W @ 50 to 220MHz

125W @ 220 to 700MHz

50W @ 700 to 1000MHz

**THROUGHPUT ENERGY:**

≤3.5mJ @ 3kA 8/20µs WAVEFORM

**TEMPERATURE:**

STORAGE: -55°C to +85°C

OPERATING: -50°C to +50°C

**VIBRATION:**

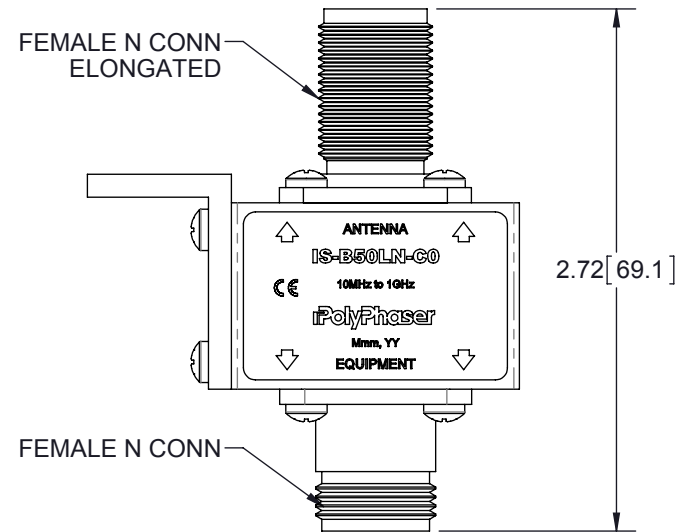
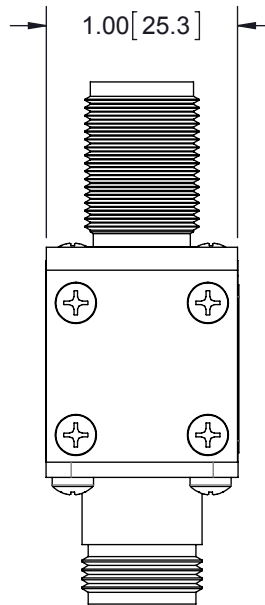
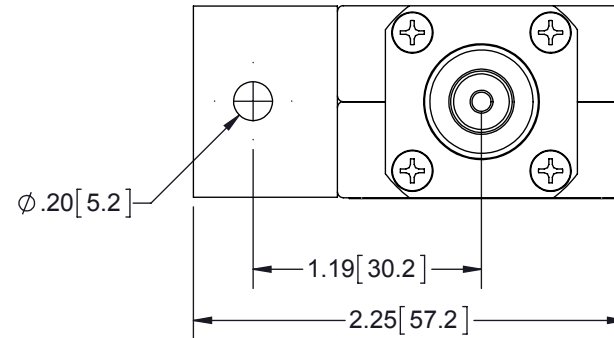
1G up to 100Hz

**CE COMPLIANT**

**RoHS COMPLIANT**

THESE COMMODITIES, TECHNOLOGY OR SOFTWARE WERE EXPORTED FROM THE UNITED STATES IN ACCORDANCE WITH THE EXPORT ADMINISTRATION REGULATIONS. DIVERSION CONTRARY TO U.S. LAW PROHIBITED.

REVISIONS				
REV.	DESCRIPTION	ECN	DATE	APPROVED
K	REFER TO ECN	13175	4/22/15	EJD



CUSTOMER APPROVAL: \_\_\_\_\_ DATE: \_\_\_\_\_

ALL DIMENSIONS SHOWN ARE FOR REFERENCE ONLY.

<small>UNLESS OTHERWISE SPECIFIED LEADING DIMENSIONS ARE INCHES DIMENSIONS IN [ ] ARE MILLIMETERS</small> <b>TOLERANCES:</b> FRACTIONS=± 1/32 .XX=± .03 ANGLES=± 1° .XXX=± .010 <small>NOTICE: THE INFORMATION AND DESIGN IN THIS DOCUMENT IS THE PROPERTY OF POLYPHASER CORPORATION. ALL RIGHTS RESERVED.</small>	DRAWN	DATE			SHEET	1	OF	1
	ENG APPD	DS			2/3/93	SCALE	1:1	
	PRODUCT MGR	JLJ	2/3/93	<b>TITLE</b> <b>BROADBAND 10MHz TO 1GHz</b> <b>N FEM BLKH</b> <small>CUSTOMER SPECIFICATION</small>				
	MARKETING APPD							
PROJECT NO.	NJ	2/3/93	DOCUMENT NAME	SIZE	CAGE	PROD CAT	PART NUMBER	REV
			IS-B50LN-C0-C	A	30992	RFP	IS-B50LN-C0	K

